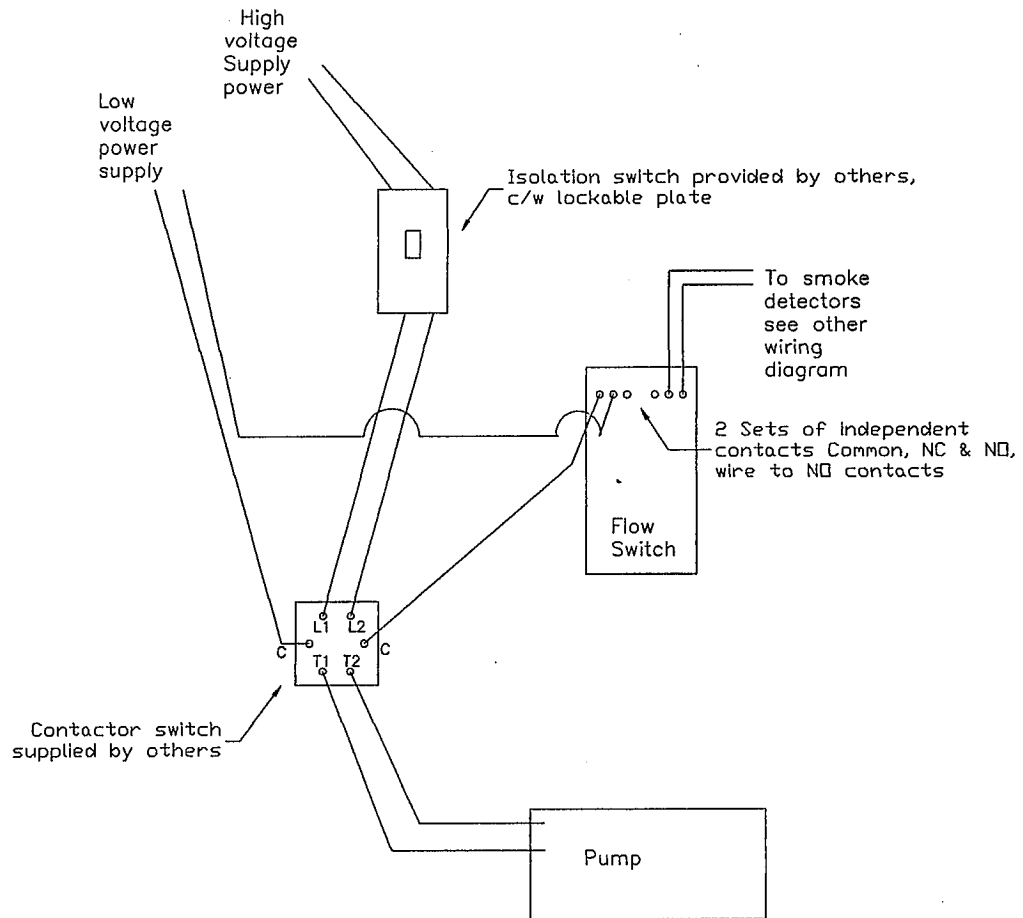


# Booster Pump Wiring Guide City Water Supply



This information is provided as a guide only, all wiring to be done by an electrician. We assume no responsibility for the accuracy of this information.

**SINGLE PHASE - Ace 5100-series**  
**MOTOR MAXIMUM CABLE LENGTH**  
 (Motor to Service Entrance)

PHASE	VOLTS	MOTOR H.P.	COPPER WIRE SIZE					
			#14	#12	#10	#8	#6	#4
1	115	1/3	78	126	204	324	504	780
		1/2	60	96	150	234	372	576
1	230	1/3	330	528	834	1314	2040	3150
		1/2	240	390	612	966	1506	2328
		3/4	180	288	456	720	1122	1734
		1	150	240	378	594	924	1428
		1 1/2	114	186	288	462	720	1122
		2	90	150	234	372	582	918
		3	72	114	180	282	450	714
		5			108	168	270	426

<b>FireBusters</b> INC.		7887 114A ST. Tel: (604) 599-4499	
		North Delta B.C., V4C 5L8 Fax: (604) 599-4319	
SCALE: 1/4"=1'0"		www.firebusters.com	
DATE:		DRAWN BY: D.K.	
		JOB #	
<b>SPRINKLER SYSTEM LAYOUT</b>			
		1 OF 1	